

Training & Professional Learning

Cynnal Cymru – Sustain Wales

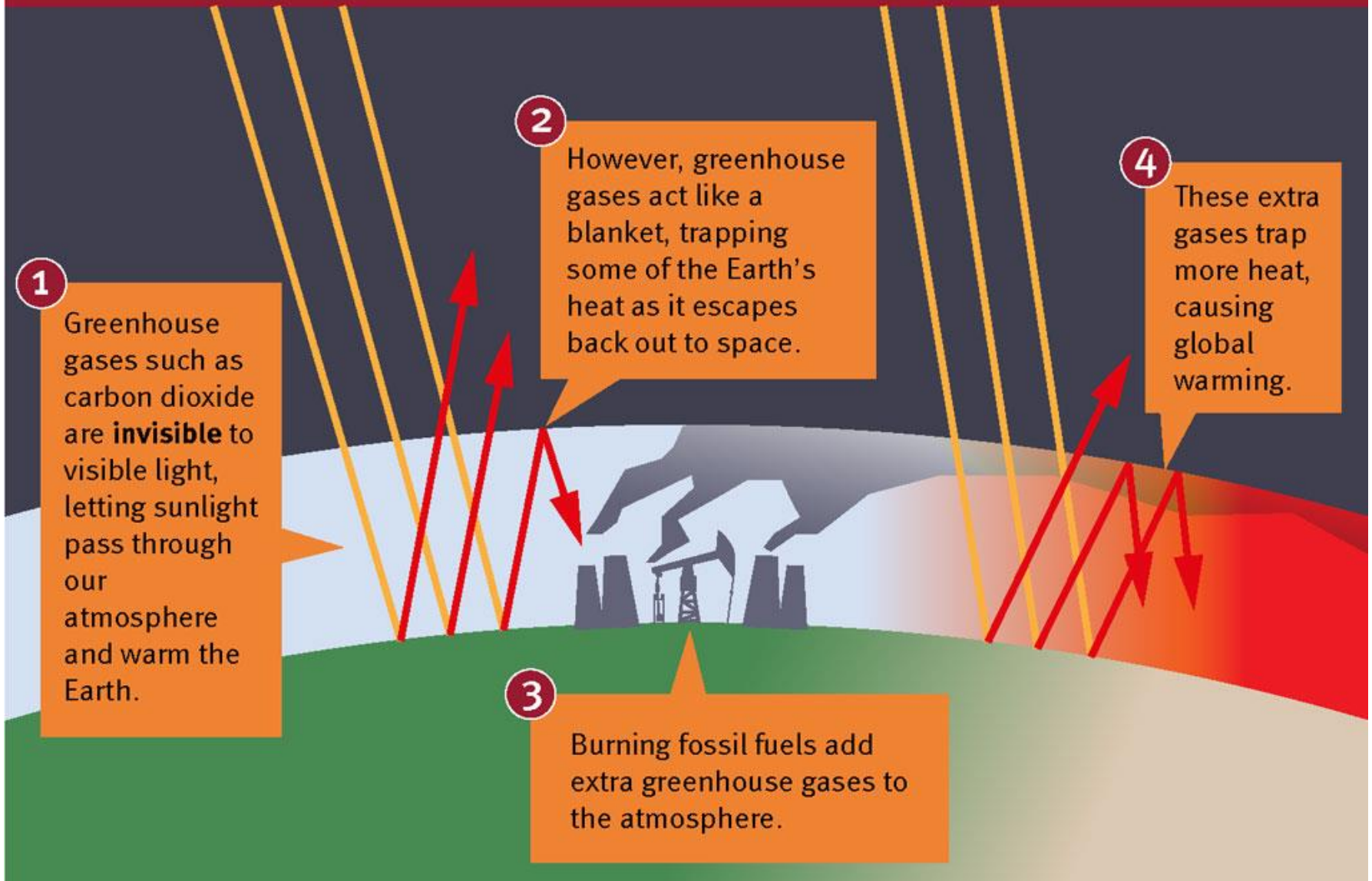


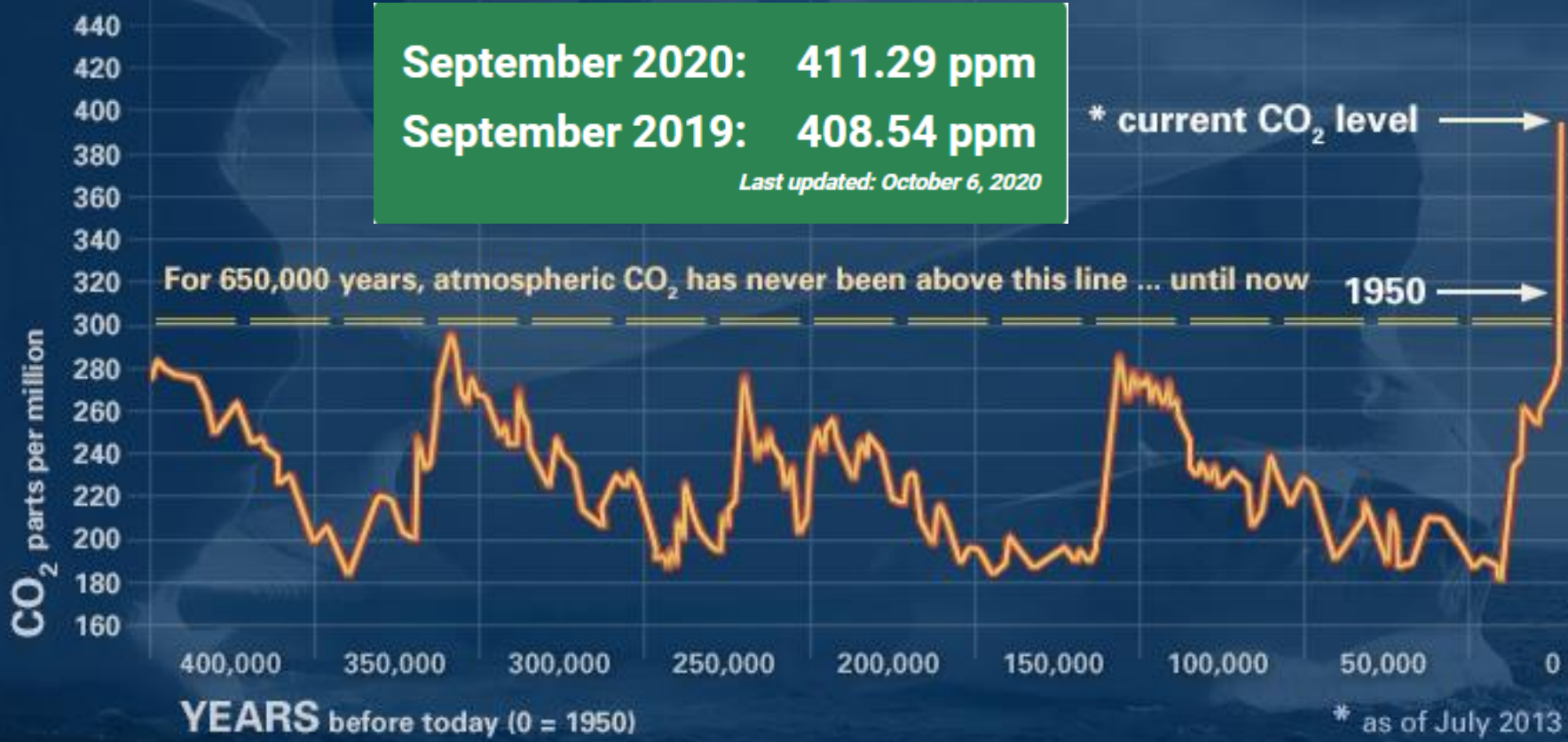
CYNNAL | SUSTAIN
CYMRU | WALES



Share Learning, Challenge Thinking, Inspire Change

THE GREENHOUSE EFFECT





GLOBAL CLIMATE CHANGE
climate.nasa.gov

So is it any warmer?

<https://climate.nasa.gov/interactives/climate-time-machine>

<https://climate.nasa.gov/vital-signs/global-temperature/>

<https://www.co2.earth>

The top six areas of climate change risk for UK

(UK Govt. 2017)

Flooding and coastal change risks to communities, businesses and infrastructure

Risks to health, well-being and productivity from high temperatures

Risk of shortages in the public water supply, and for agriculture, energy generation and industry

Risks to natural capital, including land, coastal, marine and freshwater ecosystems, soils and biodiversity

Risks to domestic and international food production and trade

New and emerging pests and diseases, and invasive non-native species, affecting people, plants and animals (research priority)

What Does The Warming Mean for Wales?



- Coastal flooding
- Increased storm intensity
- Hotter extreme summer temperatures
- Expected between now and the middle part of this century

Climate Change- What It Means for Wales?



The impacts of climate change will not be equally felt across society

The poorest and already vulnerable will be the hardest hit

Less resources to adapt to extreme weather

Insurance costs

Repair costs

Lost days

“Will I need me brolley?”

Treating climate change as a serious risk

What might be the business impacts of climate change?

- Critical business functions
- Types of extreme weather event

Critical Functions

Buildings – offices

Audience transport

Staff well-being and continuity

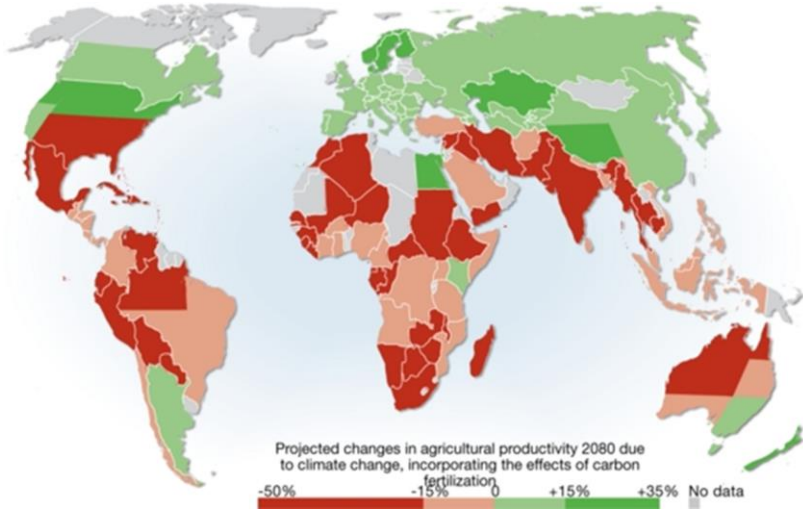
IT and data

Audience comfort & safety

Investment and savings

Stock supply and storage

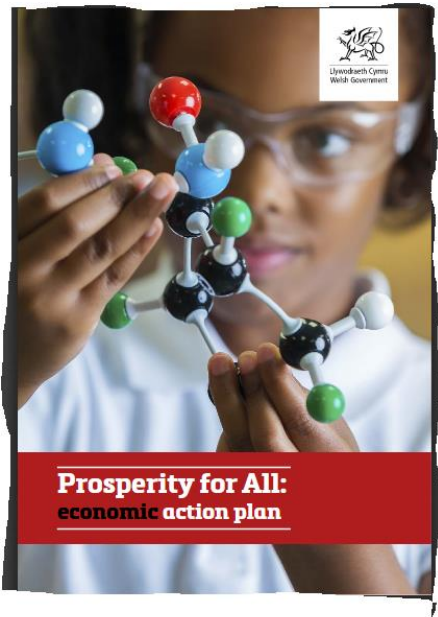
What Does The Warming Mean for Wales?



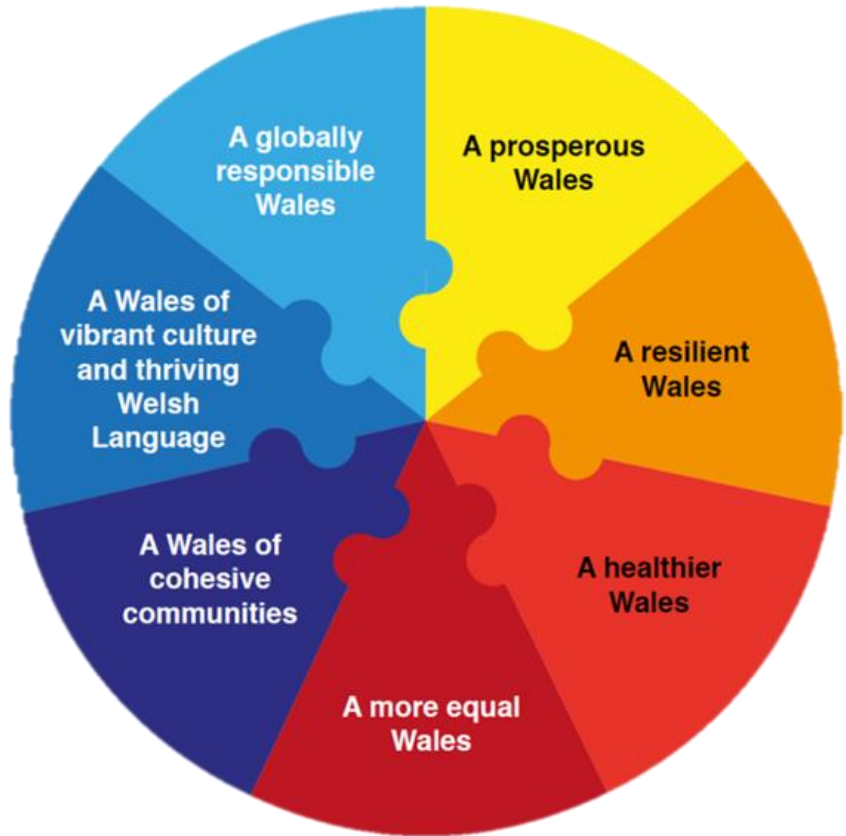
- Fluctuations in food price
- Loss of value for some stocks and share
- Increased immigration
- But also...
- Opportunities for innovation in technology and business
- Local resilience and self-sufficiency – “The Foundation Economy”
- Collaboration and partnership



Low Carbon Economy



2050



We want Wales to benefit from the opportunities arising from the shift from a fossil fuel to a low carbon based economy.....

Use the Economic Contract to drive change by linking any direct financial support we provide to business to a reciprocal commitment from the business to make progress in reducing their carbon footprint.

45% by 2030

2018 Wales Greenhouse Gas Emissions

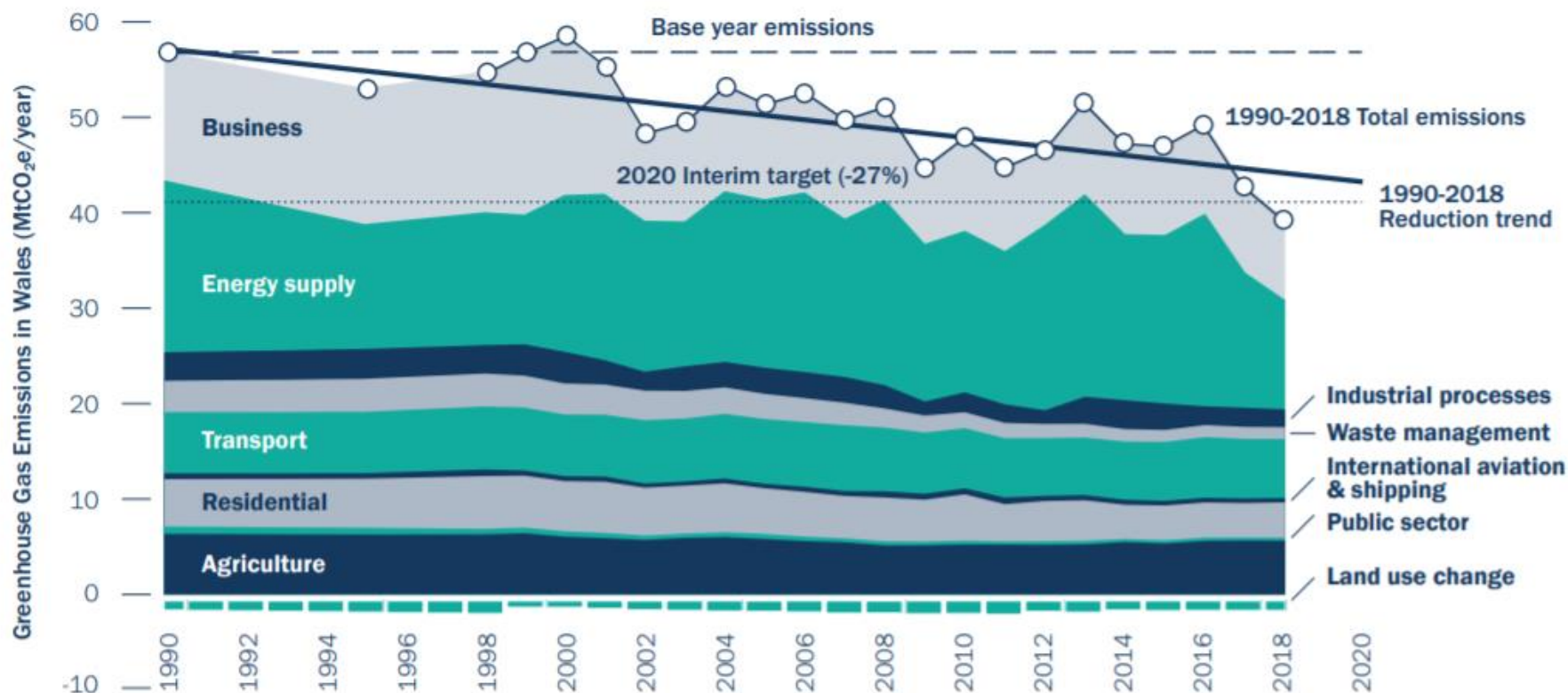


#CymruCarbonIsef
#LowCarbonWales



Llywodraeth Cymru
Welsh Government

Greenhouse Gas Emissions in Wales



Change in greenhouse gas emissions



Turn A Crisis Into An Opportunity

Julie's Bicycle

CREATIVE • CLIMATE • ACTION



Ynni
Cymunedol Cymru
Community Energy
Wales



Social Farms
& Gardens



cta
community transport
association

- Get Help
- Calculate your carbon footprint
- LED
- Green Tariff and energy efficiency
- PV Panels
- Bio-diesel generators*
- Insulation
- Boiler service or replacement
- Food source - local
- Food waste - minimise
- Plastic – water refill
- Wise use of water
- Audience travel
- Spread the message

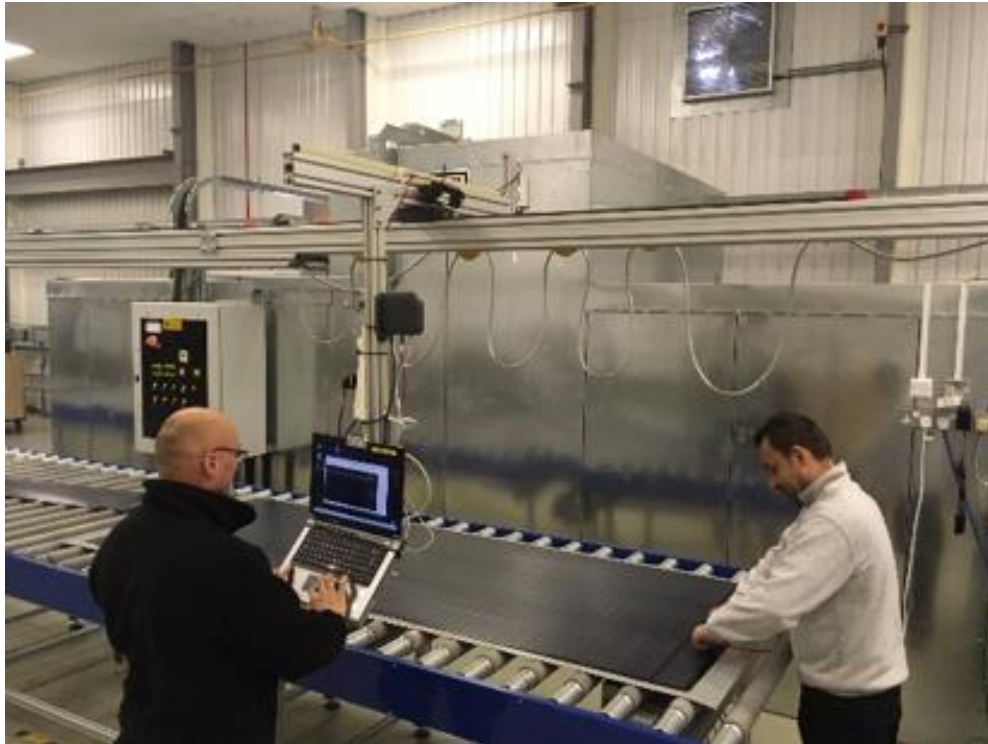
www.mipv.pro



SOLAR PANELS - MIPV IS LEADING THE WAY



<https://bipvco.com/technology>



<http://www.powerful-thinking.org.uk/resources/suppliers/>

<https://ico-assets-live.s3.eu-west-1.amazonaws.com/wp-content/uploads/2020/02/17155931/Green-Cinema-Resource.pdf>